

Anti-Myc Tag Antibody , mAb

Cat.No: DTM01

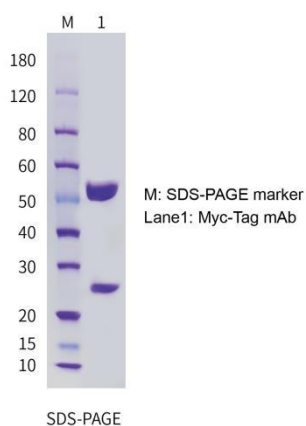
DESCRIPTION

Name	Anti-Myc Tag Antibody , mAb
Immunogen	Synthetic peptide corresponding to Myc-tag
Purification	Protein A affinity column
Purity	>95% as determined by HPLC
Species	Mouse
Isotype	IgG1
Form	Liquid
Storage Buffer	1*PBS, PH:7.4
Stability & Storage	Store at -20 °C or lower, pack and store separately to avoid repeated freezing and thawing
Period of validity	The validity period is 12 months from the date of receipt of the goods.
Application	WB:1:1000-1:5000 ELISA:1:1000-1:10000 Other applications User -optimized

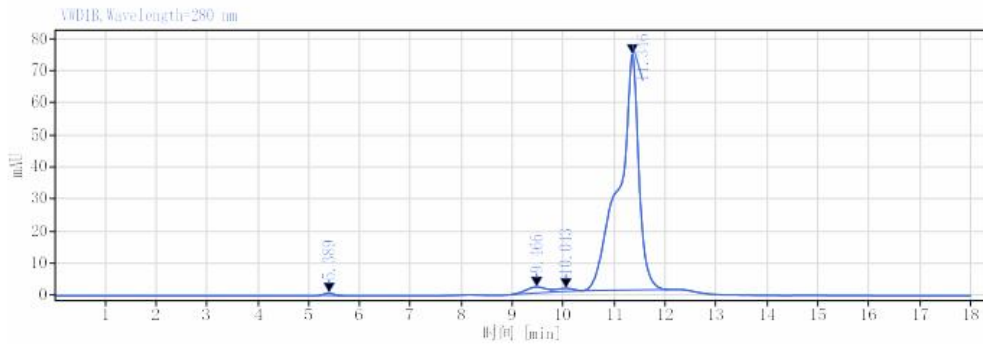
Background

Myc tags are peptide protein tags derived from c-Myc gene products. Due to their small size, they are unlikely to affect the biochemical properties of the labeled protein and can be added to the protein using recombinant DNA technology. Myc epitope tags are widely used to detect the expression of recombinant proteins in bacterial, yeast, insect, and mammalian cell systems. Anti Myc Tag antibodies can be used to detect recombinant proteins with Myc tags for various immunochemical assays, such as Western blotting, ELISA, and immunostaining techniques.

SDS

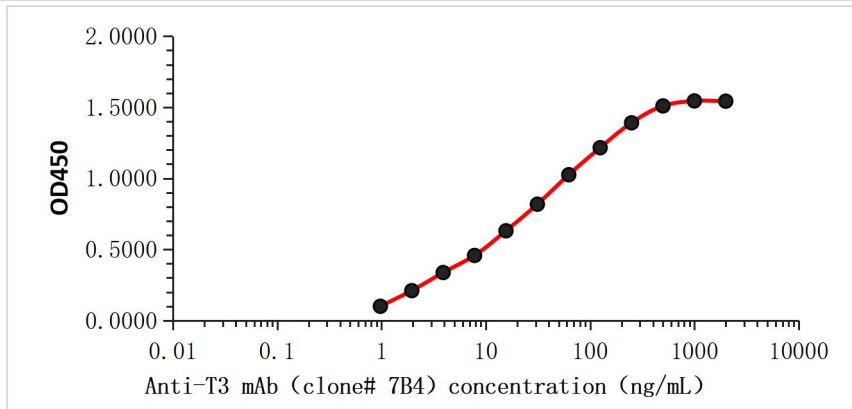


HPLC



信号:	VWD1B,Wavelength=280 nm					
保留时间 [min]	类型	峰宽 [min]	峰面积	峰高	峰面积%	名称
5.389	MM m	0.47	9.93	0.81	0.48	
9.466	MM m	0.80	51.19	1.88	2.45	
10.043	MM m	0.57	22.87	0.93	1.10	
11.346	MM m	1.71	2002.76	73.45	95.97	MYC-Tag mAb

ELISA



$KD=2.1 \times 10^{-10} \text{mol/L}$

Pre coat Myc tag protein on Elisa plates (2 ug/well), then add continuously diluted anti Myc tag monoclonal antibody solution, wash, and incubate with secondary antibody for Elisa reading. Based on the above data, the KD of the anti Myc tag monoclonal antibody binding to Myc tag protein is $2.1 \times 10^{-10} \text{mol/L}$.

感谢您选择德泰生物，我们竭诚为您服务！

For Research Use Only