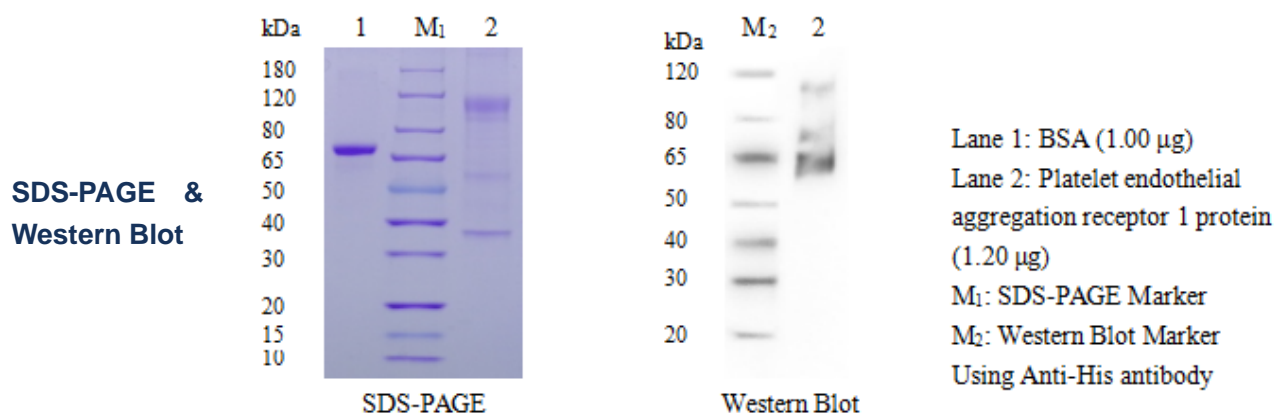


Platelet endothelial aggregation receptor 1 Protein

Cat.No:DTD0059

DESCRIPTION

Name	Platelet endothelial aggregation receptor 1 protein
Purification	The soluble target protein Platelet endothelial aggregation receptor 1 was derived from secreted expression and obtained by affinity chromatography purification
Protein Concentration	At 0.600 mg/ml, BSA was used as the standard and the protein concentration was determined by BCA
Molecular weight	80 kDa
Species	Human
Expression System	ExpiCHO
Physical Appearance	Liquid
Buffer	1×PBS, pH7.4
Stability & Storage	For long term use, aliquot and store at -80°C (avoiding multiple freeze-thaws)



Thank you for choosing Detai Biological. We are dedicated to serving you!
For Research Use Only