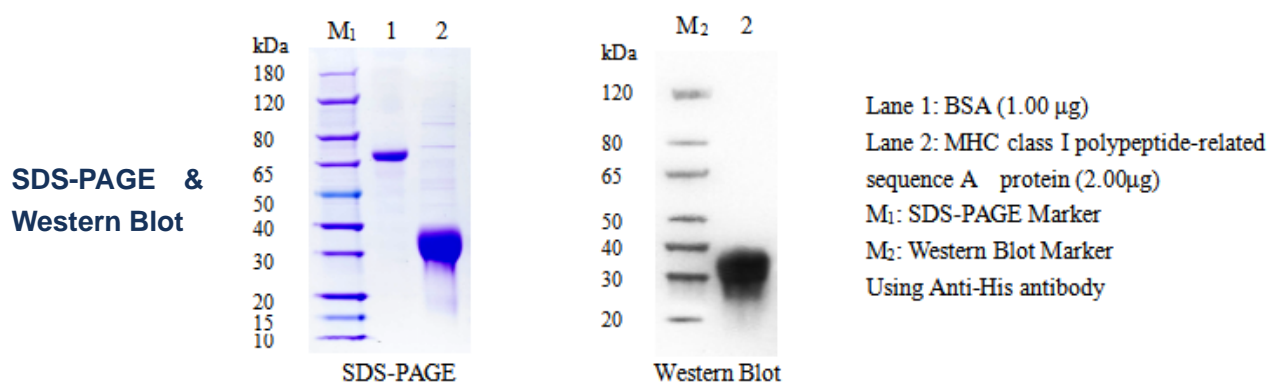


MHC class I polypeptide-related sequence A Protein

Cat.No:DTD0070

DESCRIPTION

Name	MHC class I polypeptide-related sequence A protein
Purification	The soluble target protein MHC class I polypeptide-related sequence A was derived from secreted expression and obtained by affinity chromatography purification
Protein Concentration	At 2.000 mg/ml, BSA was used as the standard and the protein concentration was determined by BCA
Molecular weight	21 kDa
Purity	>90% by SDS-PAGE
Species	Human
Physical Appearance	Liquid
Buffer	1×PBS, pH7.4
Stability & Storage	For long term use, aliquot and store at -80°C (avoiding multiple freeze-thaws)



Thank you for choosing Detai Biological. We are dedicated to serving you!
 For Research Use Only