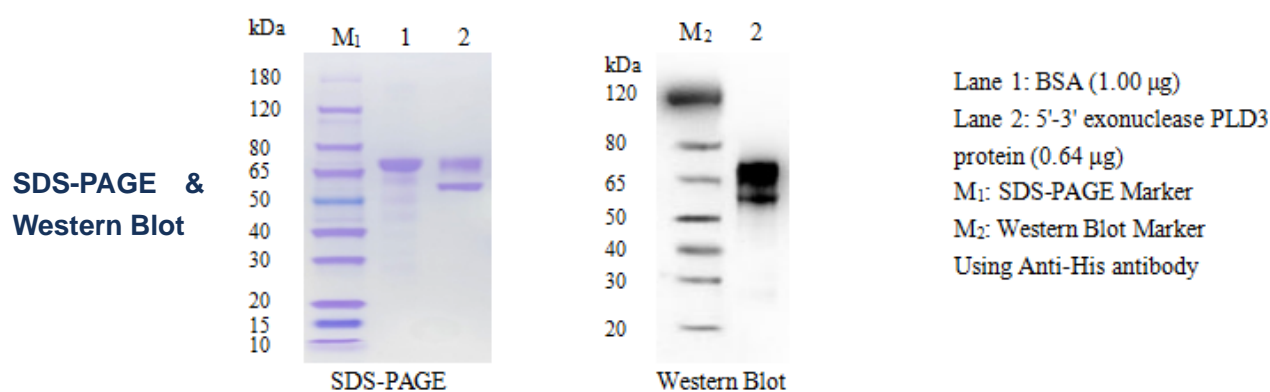


5'-3' exonuclease PLD3 Protein

Cat.No:DTD0111

DESCRIPTION

Name	5'-3' exonuclease PLD3 protein
Purification	The soluble target protein 5'-3' exonuclease PLD3 was derived from secreted expression and obtained by affinity chromatography purification
Protein Concentration	At 0.302 mg/ml, BSA was used as the standard and the protein concentration was determined by BCA
Molecular weight	49 kDa
Purity	>80% by SDS-PAGE
Expression System	HEK293
Species	Human
Physical Appearance	Liquid
Buffer	1×PBS, pH7.4
Stability & Storage	For long term use, aliquot and store at -80°C (avoiding multiple freeze-thaws)



Thank you for choosing Detai Biological. We are dedicated to serving you!
For Research Use Only