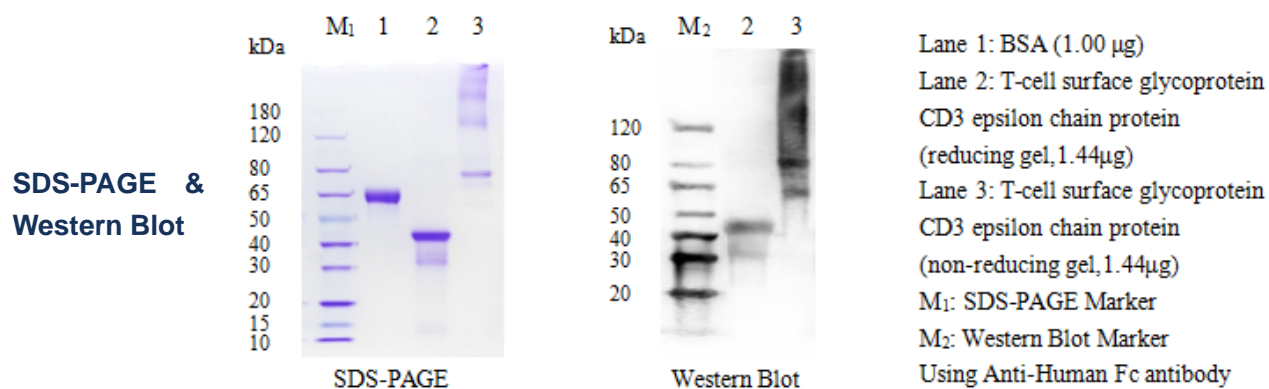


T-cell surface glycoprotein CD3 epsilon chain Protein

Cat.No:DTD0128

DESCRIPTION

Name	T-cell surface glycoprotein CD3 epsilon chain protein
Purification	The soluble target protein T-cell surface glycoprotein CD3 epsilon chain was derived from secreted expression and obtained by affinity chromatography purification
Protein Concentration	At 2.89 mg/ml, BSA was used as the standard and the protein concentration was determined by BCA
Molecular weight	39 kDa
Purity	>85% by SDS-PAGE
Species	Dog
Expression System	ExpiCHO
Physical Appearance	Liquid
Buffer	1×PBS, pH7.4
Stability & Storage	For long term use, aliquot and store at -80°C (avoiding multiple freeze-thaws)



Thank you for choosing Detai Biological. We are dedicated to serving you!
For Research Use Only